

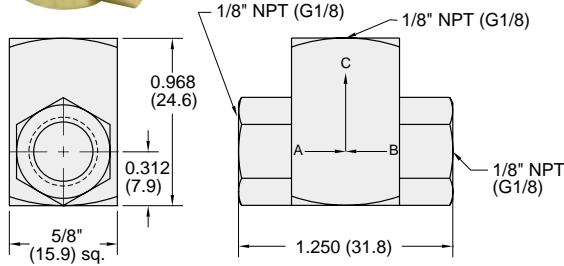


SHUTTLE VALVES

Poppet Type Shuttle Valves



Brass body, Delrin Poppet, Buna-N seal



Medium: Air, Water or Oil

Input Pressure: 300 psig/21 bar - air; 1000 psig/70 bar - hydraulic

Air Flow: 14 SCFM @ 50 psig; 26 SCFM @ 100 psig; 630 l/min @ 6 bar

Mounting: Direct or inline

Operation: Flow from "A" to "C" or "B" to "C"

Pressure to Shift: 1/2 psig approx.



Note: Shuttle valves should not be used as a pressure selector

Part No. Description

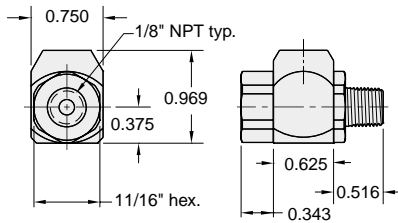
MJSV-1Poppet Shuttle Valve, 1/8" NPT

MJSV-1-MG .Poppet Shuttle Valve, G1/8

J-Series Shuttle Valves



Part No.
JSV-2FPF



Poppet type shuttle (double check) valve. Brass body, stainless steel shuttle, Buna-N seal

Medium: Air, Water or Oil

Input Pressure: 300 psig max.

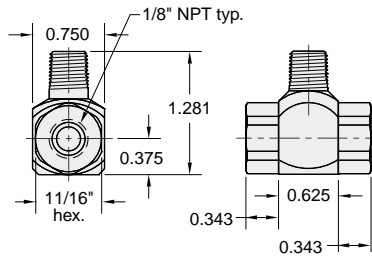
Air Flow: 30 SCFM @ 50 psig
50 SCFM @ 100 psig

Mounting: Direct or inline

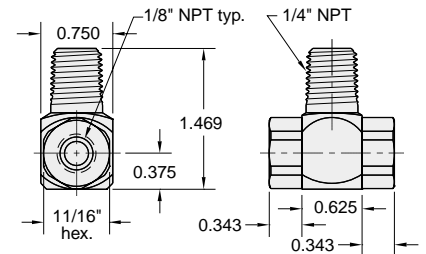
Pressure to Shift: 1 psig approx.



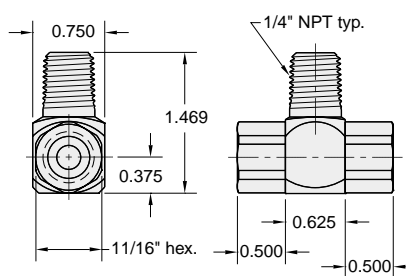
Part No.
JSV-2PFF



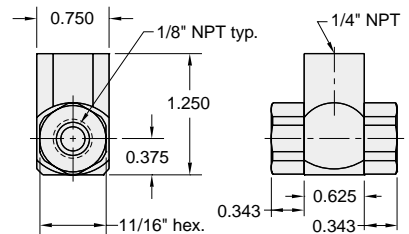
Part No.
JSV-2WFF



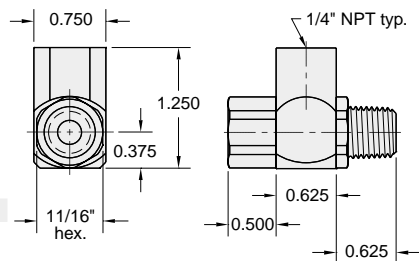
Part No.
JSV-2WYY



Part No.
JSV-2YFF



Part No.
JSV-2YYW



Part No.
JSV-2YYY

